

# 2018 CARBON FOOTPRINT: 8302 Tons of CO<sub>2</sub>

Discover each subsidiary carbon footprint, in tons of CO<sub>2</sub>



 Argentina: 78 t

 Brazil: 325 t

 Canada: 168 t

 **Chile: 176 t**

 Colombia: 85 t

 United States: 260 t

 Mexico: 13 t

 Peru: 83 t

 South Africa: 134 t

 Burkina Faso: 108 t

 Madagascar: 190 t

 Morocco: 41 t

 Tunisia: 125 t

 Germany: 271 t

 Spain: 44 t

 France: 3914 t

 Portugal: 21 t

 Romania: 168 t

 Serbia: 77 t

 Swiss: 181 t

 Turkey: 645 t

 China: 597 t

 South Korea: 223 t

 India: 204 t

 Japan: 49 t

 Singapore: 122 t

## Introduction

### Why are we doing a carbon footprint?

We want a **picture of what the Group is emitted** at a given moment. We are realizing it every 2 years and it helps us to choose carbon reduction projects as the ones on travels, carpooling, turn into electric cars, etc.

### Who is compiling data for the whole Group?

**The CSR departement** is doing it:

- Ons BOUZRARA, CSR intern
- Fanny RAYNIER, Group CSR support manager



## Carbon footprint

### What are the uses of the carbon footprint?

- **To know** your own climate impact.
- **To identify** your main items of emissions.
- **To establish** an action plan to reduce your emissions.
- **To allow** the whole Group to be 100% carbon neutral, thanks to carbon compensation.

# 100%

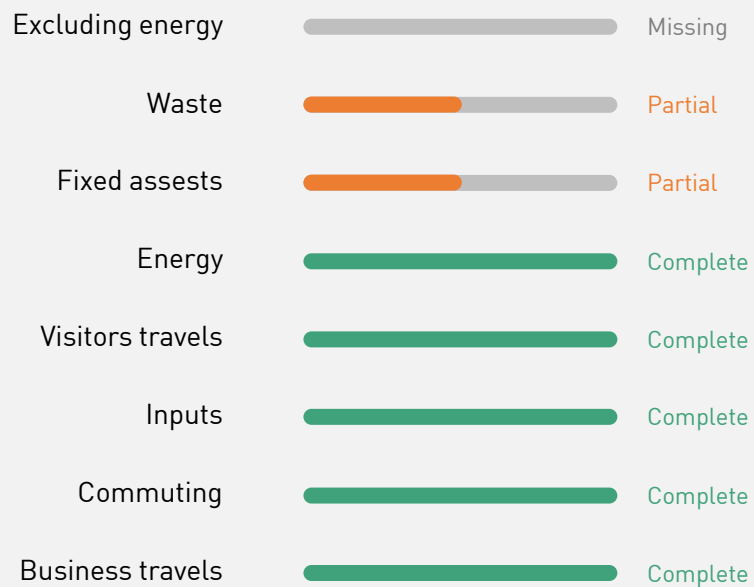


Since 2014 and every year, ECOCERT Group is 100% carbon neutral!

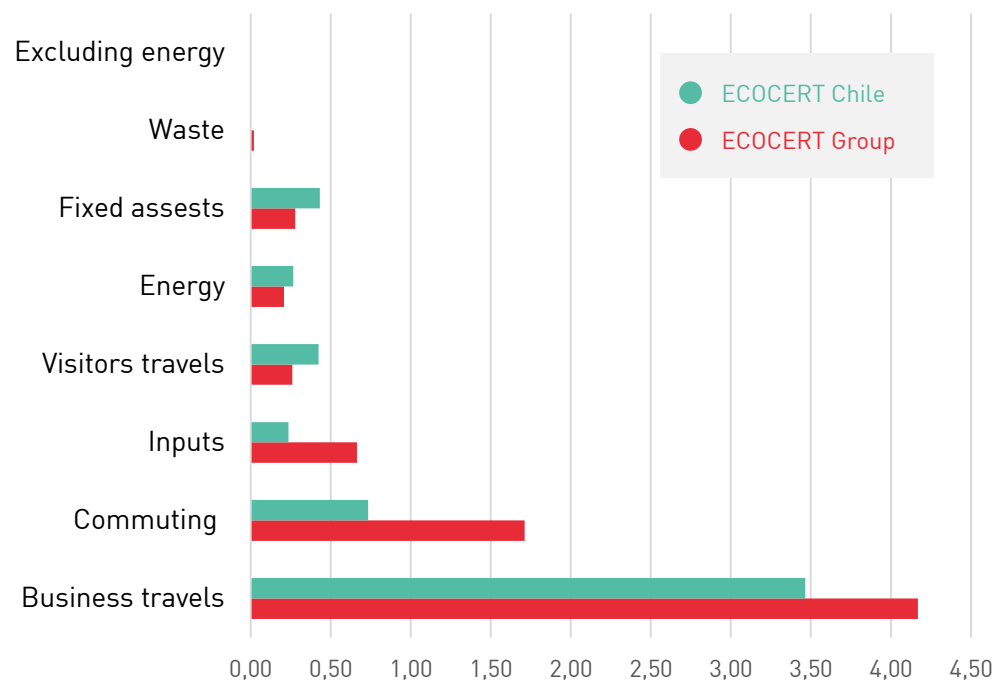
# What is ECOCERT Chile carbon footprint?

176 tons of CO<sub>2</sub>  
Total of ECOCERT Chile  
2018 emissions

## 1 YOUR DATA Return rate for your data in 2018:



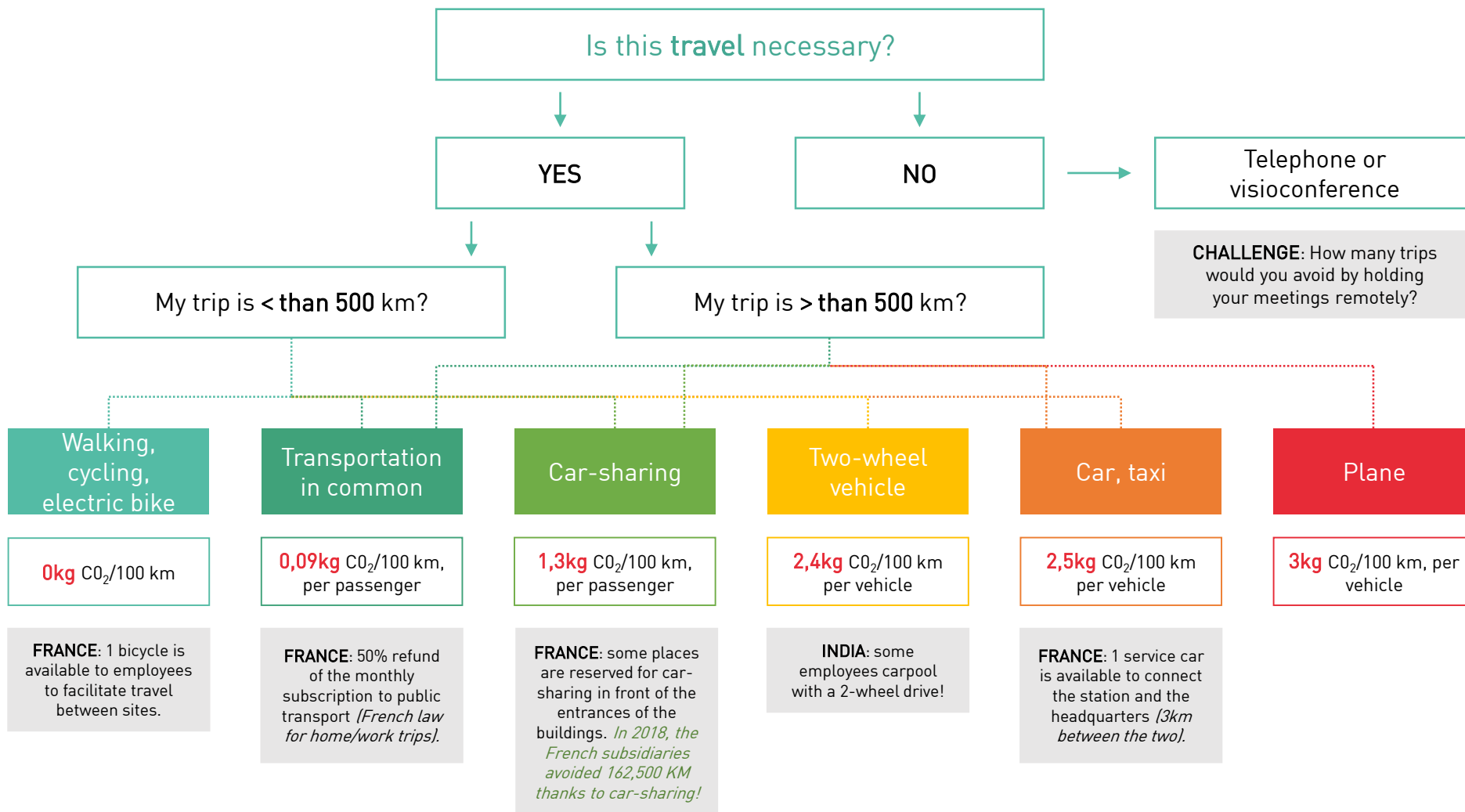
## 2 YOUR RESULTS Your average emissions of CO<sub>2</sub> per FTE (Full Time Employee) in comparison to the ones of the Groupe (per FTE) in 2018:



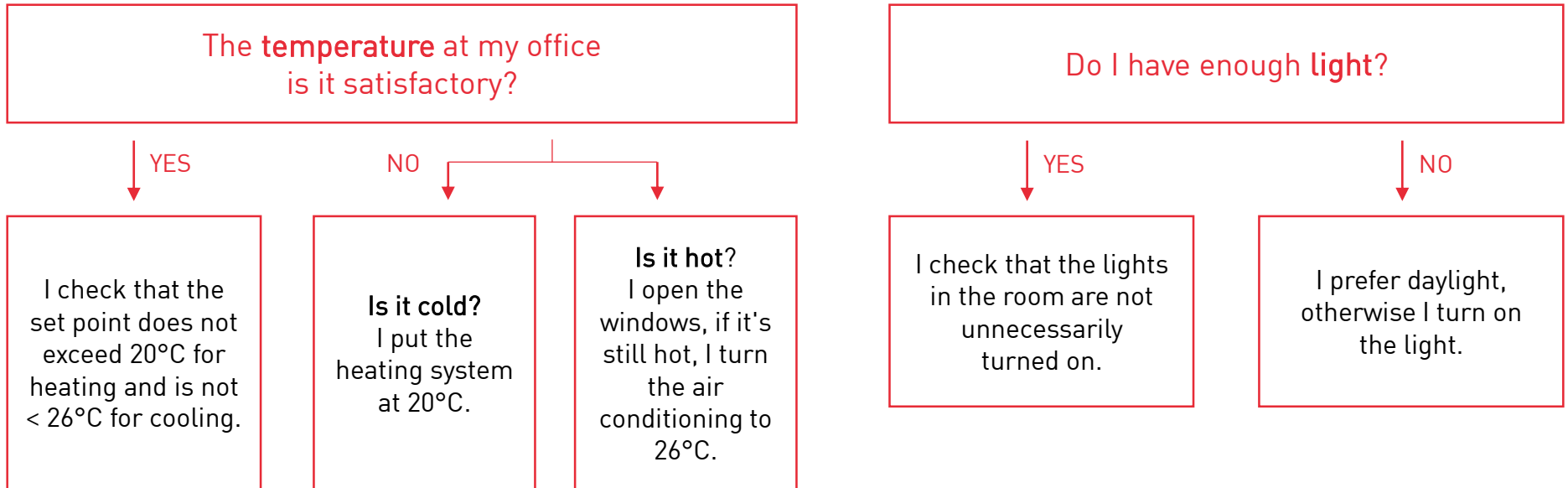
## 3 YOUR CONTINUOUS IMPROVEMENT Professional travels and home-office travels are your priority items to reduce your carbon emissions.

# How can I optimize my travel to reduce my carbon impact?

Business travel, home-to-work travel, welcoming an external visitor...



## How can I optimize my office energy consumption?



## DID YOU KNOW?



Lower the set point value of air conditioning of 1°C generates 6 to 12% of overconsumption.



The opposite is true for heating: 1°C higher increases by about 7% energy consumption.



Leaving your computer in standby consumes 20 to 40% more than a computer on.



A computer is off, but remains plugged in, continues to consume about 70 watts per hour [Wh] per day.

## Compensation

This year again, **100% of our emissions have been compensated** at the Group level!

To compensate our 8 302 tons of carbon, this year, we chose **2 different projects**:



### UTSIL NAJ PROGRAM

- ☑ Number of compensated tons: **2 300 t**
- 📍 Location: **Mexique**
- 📄 Project: Making of improved ovens to allow people to cook on a healthy way and with less wood.
- 👉 Our partner: **Microsol**



### CHOLOMA PROJECT

- ☑ Number of compensated tons: **6 002 t**
- 📍 Location: **Guatemala**
- 📄 Project: Investment in a hydroelectric plant to supply local people in electricity.
- 👉 Our partner: **Secacao**